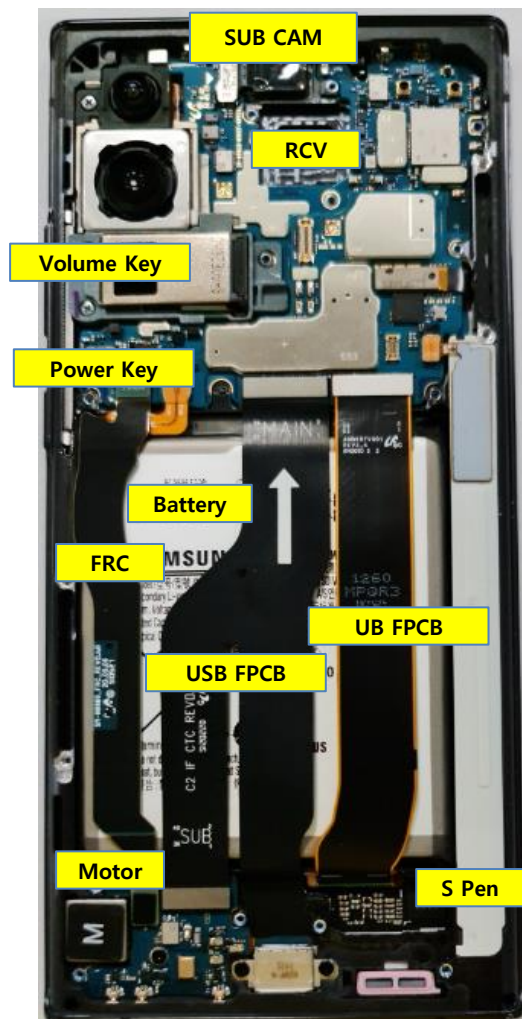
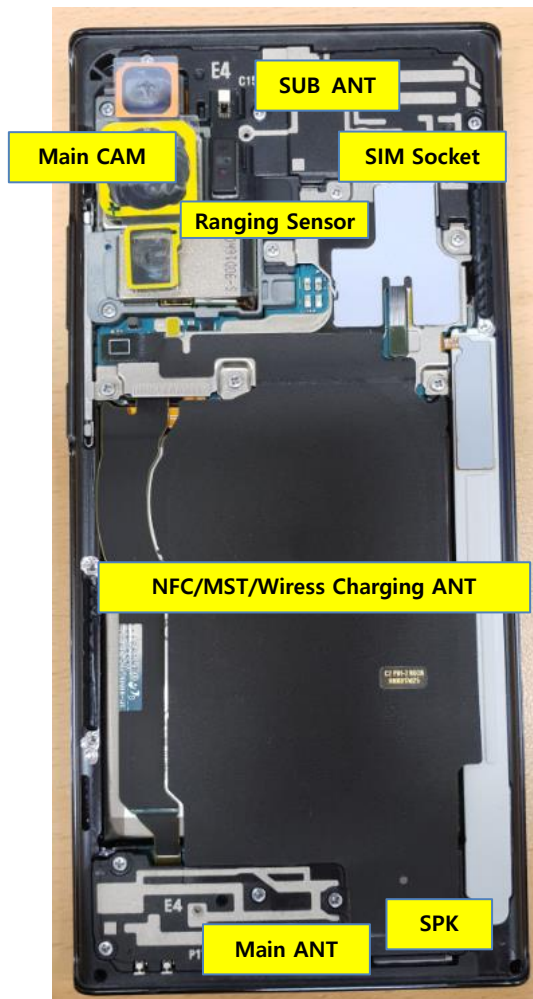

7. Level 2 Repair

7-1. Components on the Rear Case







7. Level 2 Repair

7-2. Pre-requisite

	
Tweezers / Disass'y Stick / Screw Driver	Anti-static Gloves
	
Anti-static Mat	AOD
	
Ethyl Alcohol	Cotton Swab

7. Level 2 Repair

7-3. Parts which must be changed after repair

BOM description & part code	KIT CODE	Image	Remarks
Back Glass Outside tape [GH81-19337A]	GH82-23394A		Left items must be changed to the new one in case of disassembly.
Cam sealing Sheet [GH98-45291A]			
Mic Sealing Tape [GH02-07406A]			
Screws for Rear(15) & Camera(2) [6001-003400]		3.5mm Silver screw (Blue resin) 	
Screws for Sub-PBA(3) [6001-003407]		2.5mm Black screw (Blue resin) 	

7. Level 2 Repair

7-4. Disassembly

1

- 1) Put the device in the AOD jig. Set the AOD condition
- SOC 68%↓: Upper 70℃/ Lower 60 ℃ 5min
- SOC 68%↑: Upper 60℃/ Lower 60 ℃ 5min
2) Disassemble the OCTA using the AOD.
(If use alcohol, happen window bubble effect).



2

- Detach the Back Glass.
- Detach the left side of Back glass.

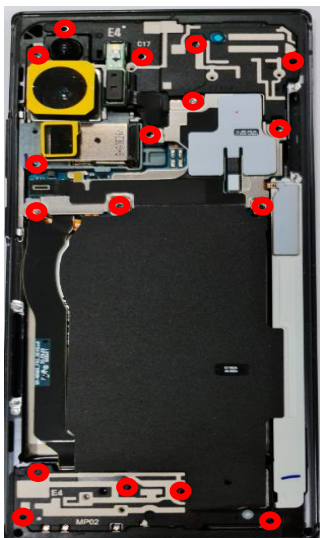


※ Caution
Be care of scratch.

※ Caution
Be care of scratch.

3

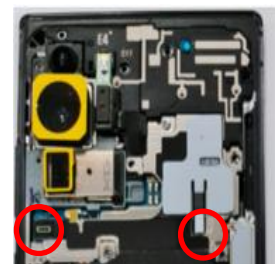
- Unscrew 17 Point and disassemble SIM Tray from device.



※ Caution
Be care of Rear damage.

4

- Disassemble Rear mid ASSY
(Before disassemble Rear mid ASSY, MST Conn disassemble first.)



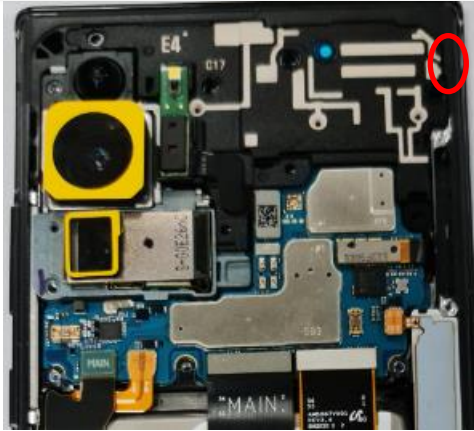
MST Conn
UWB Conn

※ Caution
1) Be care of scratch.
2) Be care of Rear and connector damage.

7. Level 2 Repair

5

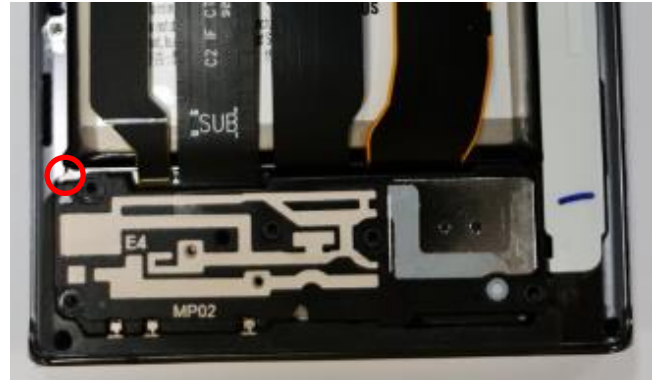
Disassemble Rear of top side.
(Use disassemble hole right side of Rear to detach it)



Rear Top disassemble hole.

6

Disassemble Rear of bottom side.
(Use disassemble hole left side of Rear to detach it)



Rear Bottom disassemble hole.

※ Caution

- 1) Be care of scratch.
- 2) Be care of Rear and connector damage.
- 3) Be careful not to damage the PBA.

※ Caution

- 1) Be care of scratch.
- 2) Be care of Rear and connector damage.
- 3) Be careful not to damage the PBA.

7

Disassemble 9 Point connector of PBA.

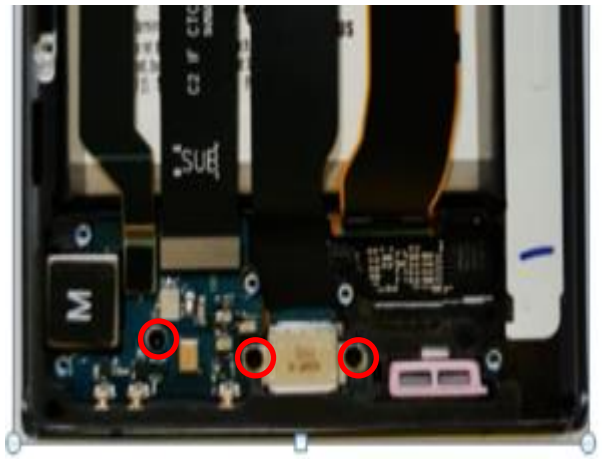


※ Caution

- 1) Be care of scratch.
- 2) Be care of connector/cable damage.

8



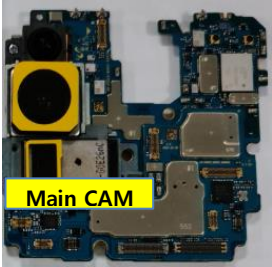
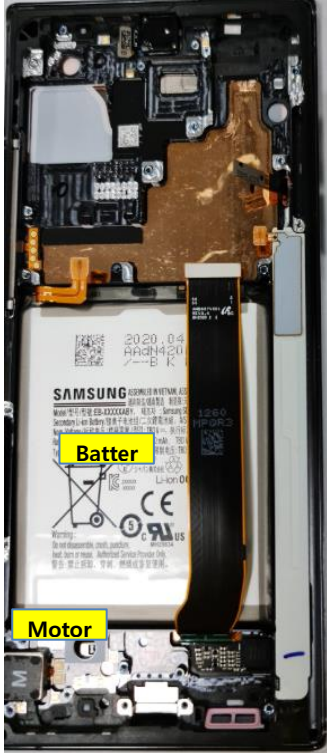
Unscrew 3 Point in SUB PBA 3 Point.



※ Caution

- 1) Be care of several kinds of damage.
- 2) Be care of SUB PBA damage.

7. Level 2 Repair

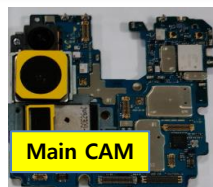
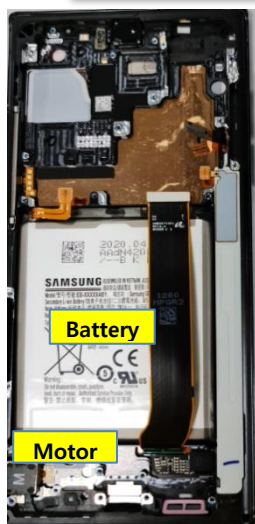
<div>9</div> <div>Detach Main and Sub PBA (Before Detach main PBA disassemble first.)</div> <div></div> <div><div>※ Caution</div><div>Be care of several kinds of damage.</div></div>	<div>10</div> <div>Detach other components.</div> <div></div> <div><div>※ Caution</div><div>Be care of several kinds of damage.</div></div>
--	---

7. Level 2 Repair

7-5. Assembly

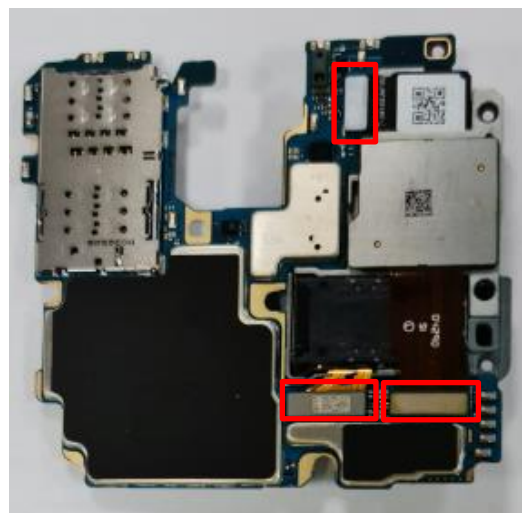
1

Attach components on Front.
(RCV module, Motor, Battery)



2

Attach Main CAM on PBA.



※ Caution

Be care of FPCB, components damage and tilt.

※ Caution

Be care of press power/time.

3

Assemble Main PBA and Sub PBA to Front case

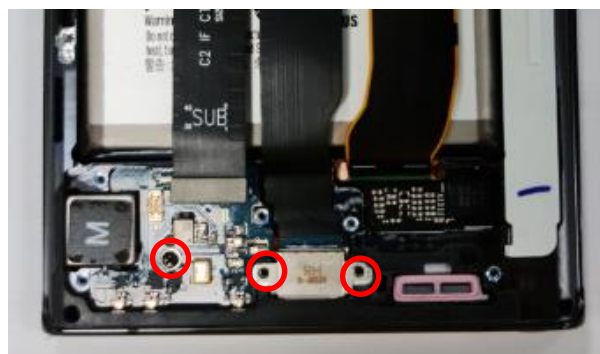


※ Caution

1) Be care of scratch and REAR damage.
2) Check for contact damage.(red area).

4

Screw 3 points in SUB PBA.
- Torque : 1.4 Kg·cm)



※ Caution

Be care of chip damage nearby screw point.

7. Level 2 Repair

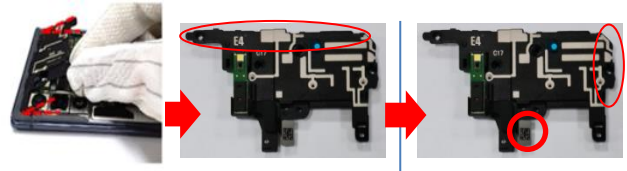
5

Assemble battery connect and the other connectors(9 Point).
Also Front CAM assemble.

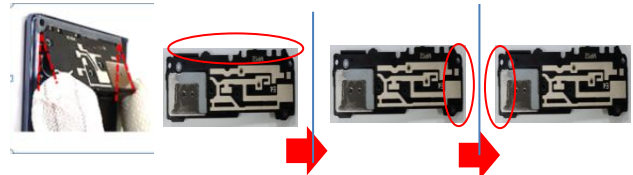


6

Assemble the TOP and BOTTOM REAR in sequence. also Ranging Sensor.



TOP REAR sequence



BOTTOM REAR sequence

※ Caution
Be care of press power/time.

※ Caution
Be care of scratch and REAR damage.

7

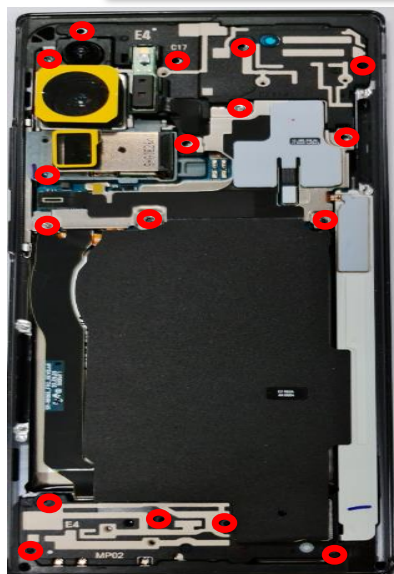
MID REAR ASSY assemble.
(Before Mid Rear ASSY assemble, MST conn assemble first)



MST Conn

8

Screw insertion 17 Point and assembling SIM socket .
- Torque : 1.4 Kgf·cm



※ Caution
1) Be care of scratch and REAR damage.
2) Be care of press power/time.

※ Caution
Be care of Rear damage.

7. Level 2 Repair

9

Attach the back-glass tape on the Rear.
- Gently press all adhesive parts of tape using disassembly stick or hands.



Attach back-glass tape

※ Caution
Be care of scratch and tilt.

10

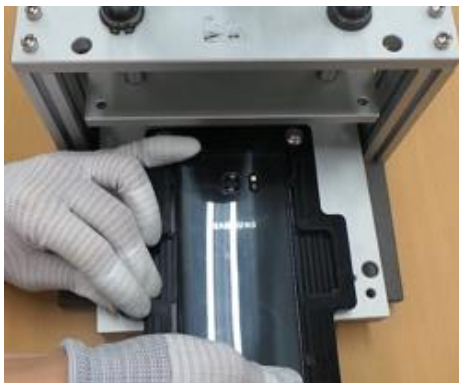
Attach the back glass on the REAR side.



※ Caution
Be care of scratch and tilt.

11

Press Back Glass.
Pressing force & Time : 1 N / 1 Minute
SIM Tray must be seperated before pressing the backglass or the OCTA.



※ Caution
Be care of scratch and tilt.